

Network Bridging (a.k.a. Network Tuners) is compatible with PCs running Windows 7 with Media Center only. It is not supported on Windows 8.

1. Run Ceton InfiniTV Installer and Open Ceton Network Tuners in Media Center



The Network Tuners wizard is an InfiniTV feature that is installed as part of the **Ceton InfiniTV Installer** application during the setup process for a Ceton InfiniTV tuner device. You can download the latest Ceton InfiniTV Installer from the [Installation & Downloads](#) page on our website. Network Tuners setup is accessed in the **Extras Library** section of **Extras** from the Windows Media Center main menu (see above).

Network Tuners setup must be run on all PCs which will utilize Ceton InfiniTV tuners – the host PC (the PC with InfiniTV installed) as well as any Client PCs that will use a tuner shared from the host.

First run Network Tuners setup on the Host PC. If there are multiple Ceton InfiniTVs on the Host PC, all tuners from these devices will be available on the network to be assigned to any PC.

Please note:

- The Microsoft **Digital Cable Advisor** (found in Windows Media Center / Extras / Extras Library) must be run on all PCs, Host PC and Client PCs, before they can receive cable TV content.
- The CableCARD only needs to be paired once on the Host PC with your cable TV provider. Reconfiguring Network Tuners or going through Media Center setup again does not affect CableCARD pairing.

2. Select Setup InfiniTVs



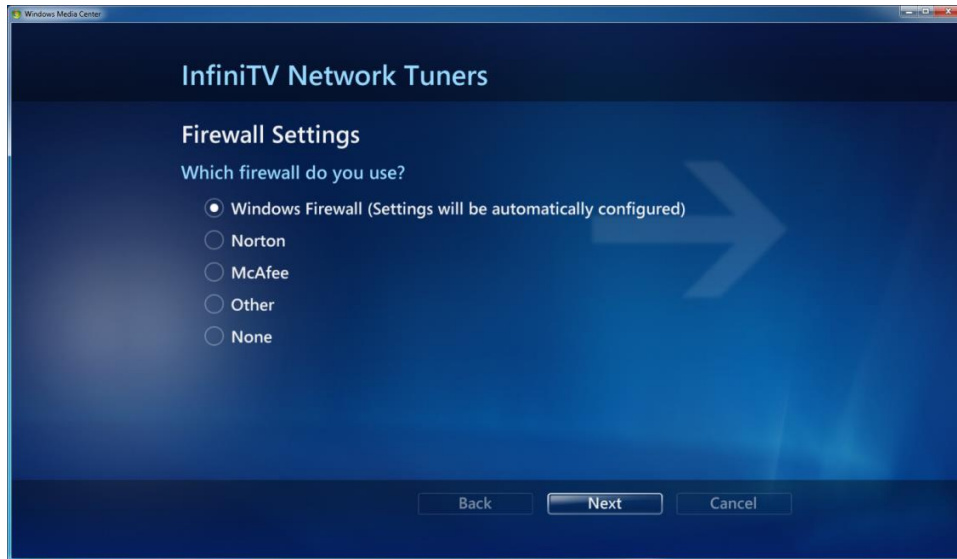
Select **Setup InfiniTVs** to proceed with Network Tuners setup. **Reset InfiniTVs to factory settings** will reset all InfiniTVs on the network back to their original settings and can be useful if you're having problems with your InfiniTV device.

3. Configure InfiniTV with Discovery Results



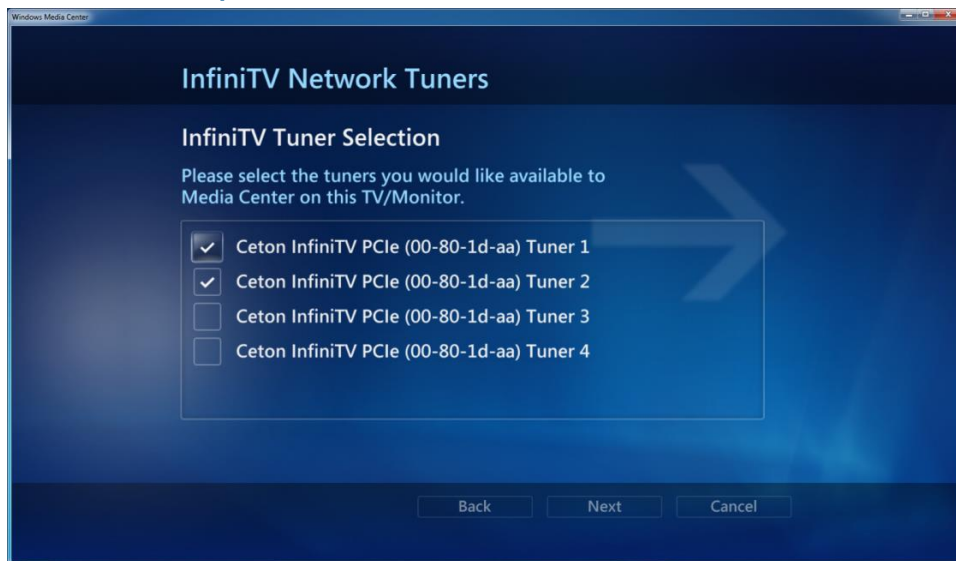
If there are multiple Network Interface Controllers (NIC) available in the PC, Network Tuners setup uses the fastest enable NIC as the default. Selecting the “configure manually” option will allow you to choose any available wired or wireless NIC.

4. Configure Firewall



The Firewall settings are automatically configured for Windows Firewall. Selecting another option lists the required port settings for other Firewalls. These must be configured manually.

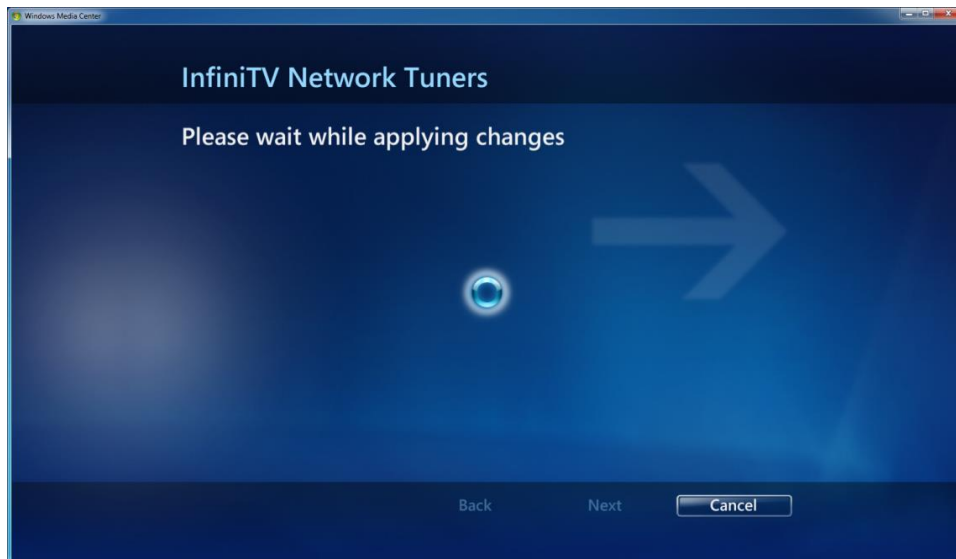
5. Select Tuners for this TV / Monitor



Select the tuners to be assigned to the TV/Monitor attached to this PC. In the above example, Tuner 1 and Tuner 2 have been selected for the Host PC, leaving Tuner 3 and Tuner 4 available to be used by one of two Client PCs elsewhere on the network.

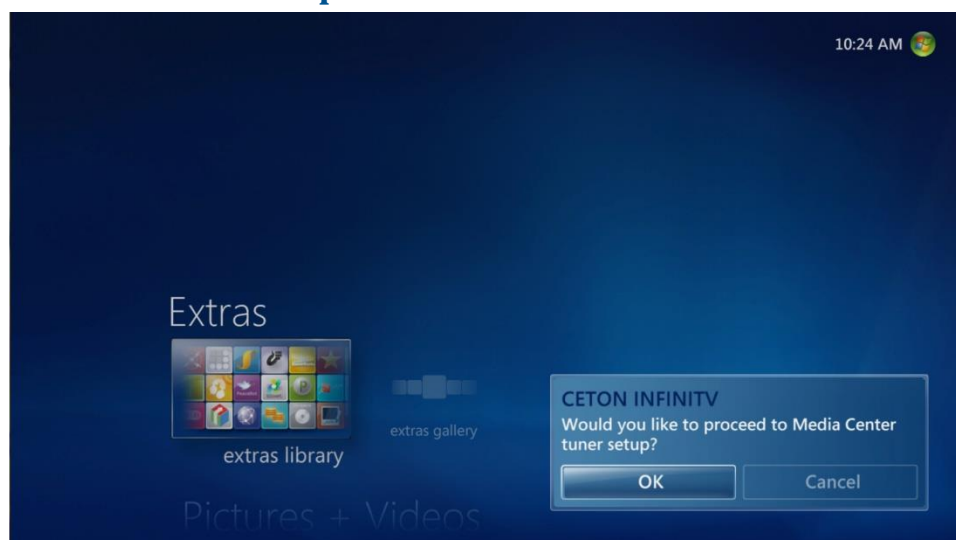
When installing Network Tuners on the Client PC, you will only be able to select an available tuner that isn't being used by the Host PC (see step 11 below).

6. Apply Configuration Changes



Applying changes sets up the network and assigns the selected tuners to this PC.

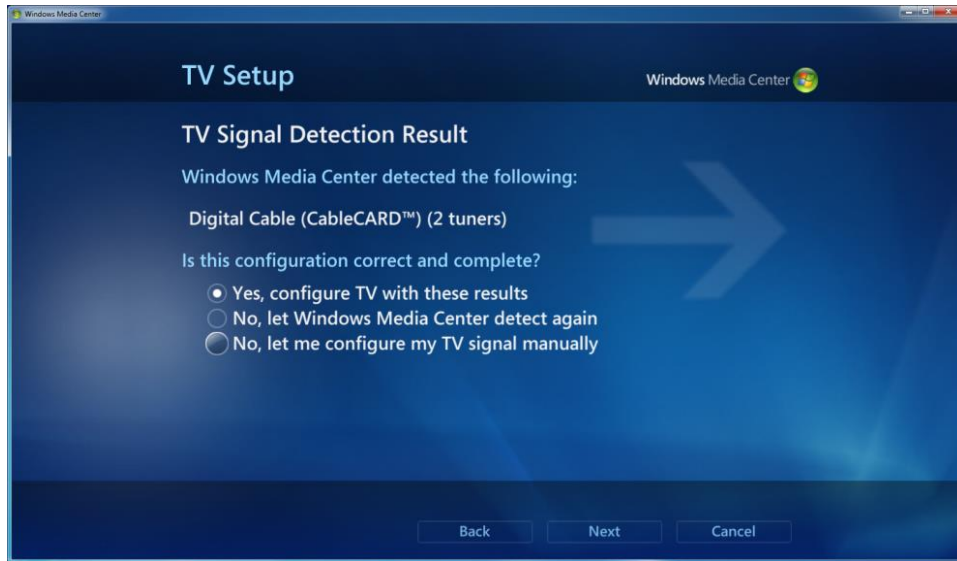
7. Proceed to Media Center Setup



Media Center tuner setup must now be run in order to configure the selected tuners for use with this PC with Media Center. The Microsoft Digital Cable Advisor must be run on each PC which will be used.

Select **OK** to set up TV tuners in Media Center.

8. TV Signal Detection Results



Follow the prompts on the next few screens to step through the TV tuner setup process:

- Set Up TV Signal
- Select your Region for TV services
- Enter your zip code to download local program guide listings
- Agree to Program Guide Terms of Service
- Agree to Microsoft PlayReady™ PC Runtime EULA
- Download TV Setup Data

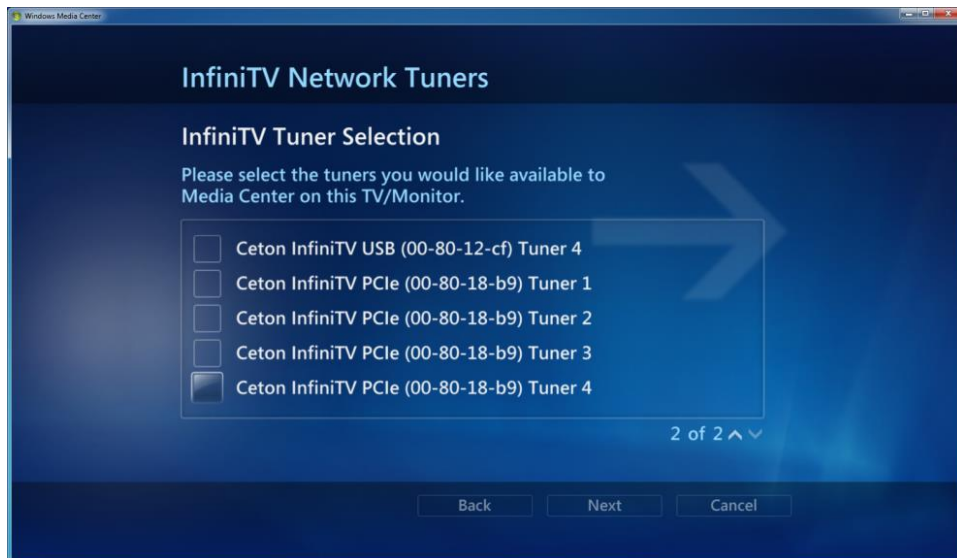
When Media Center gets to the TV Signal Detection Result screen, it will find only the tuners which were previously selected for this PC (for example it will find 2 tuners using the setup example in Step 5 above).

9. TV Signal Setup Finished



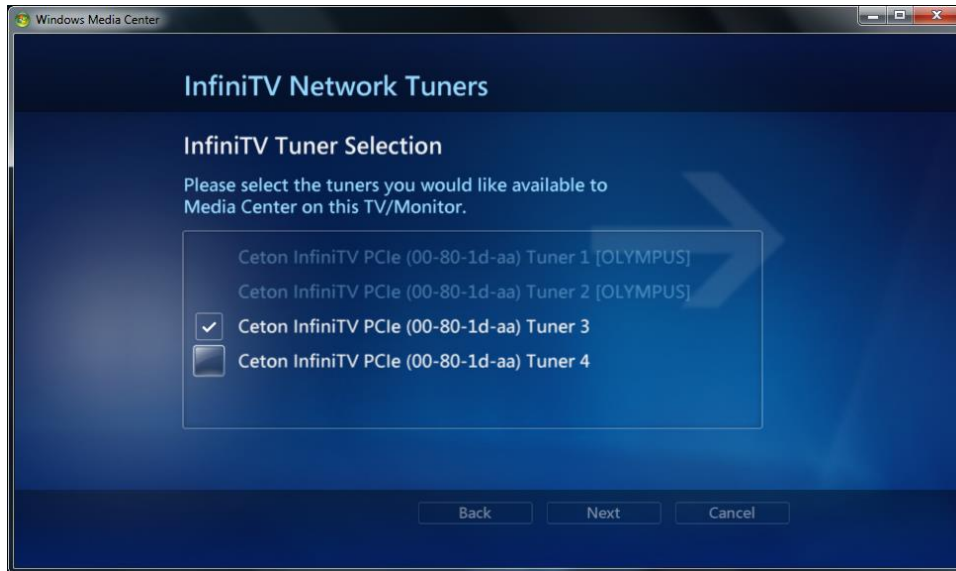
Click **Finish** and enjoy live cable TV! As setup in this example, Media Center will now be able to record two live cable TV channels on this PC with the other two tuners available to be assigned to other PCs.

10. Multiple InfiniTV Devices



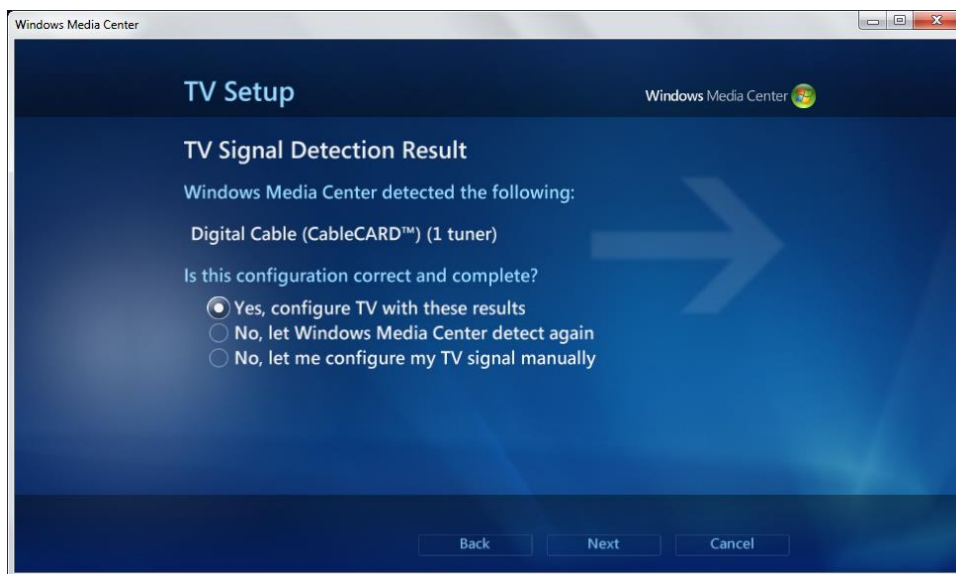
If you have multiple Ceton InfiniTV devices installed on the Host PC, the Network Tuner wizard will identify all of them and you can choose which tuners will be assigned to the Host PC and which tuners will be assigned to any client PC(s). You can even mix and match InfiniTVs with different interfaces (PCI Express and USB), as in the example above.

11. Configure Client PCs



After setting up Network Tuners on the Host PC, the Network Tuners wizard must be run on each Client PC as well to configure those PCs for receiving cable TV. Follow Steps 1 to 9 above on each Client PC. Only tuners which have not been previously selected for use on other PCs will be available. Tuners previously selected are grayed out with the PC assigned to each tuner shown (see above).

12. Media Center Setup on Client PCs



Complete Media Center setup on each client PC and enjoy live cable TV on multiple desktops, laptops, All-in-Ones and tablet PCs from a single cable TV connection! Any number of tuners can be assigned to any PCs up to the limit of available tuners. A Gigabit Ethernet Network is recommended if more than one tuner is assigned to the Network.